

## CENTRE HIGHLIGHTS

- **50-Bed Air-Cooled/AC Accommodation** – Options of Single, Double & Dormitory Rooms
- **2 Well-Equipped Conference Halls** – Modern seating, projector, and audio facilities
- **In-House Catering for 100 People** – Nutritious meals, tea/coffee & hi-tea service
- **Wi-Fi Enabled Campus** – Seamless internet for trainings & meetings
- **Ample Parking Space** – Secure parking for cars and buses
- **Easy Connectivity** – Centrally located in Bhopal with road, rail & air access
- **Support Services** – Print, photocopy, laptop rental & logistic assistance
- **Green & Peaceful Environment** – Ideal for residential learning and workshops



## ABOUT US

At Samarthan, we believe that effective learning needs more than just a hall – it needs the right space, environment, and support. Our Residential Training Centre in Bhopal has been designed to provide all three.

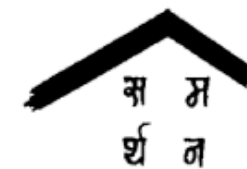
Whether it's a two-hour meeting or a week-long residential program, our centre offers a blend of affordability, comfort, and functionality. With fully equipped training halls, reliable accommodation, and wholesome meals, we take care of the essentials so that you can focus on what matters most – building capacities and strengthening teams.

Our centre is not just a venue – it's a partner in your learning journey, ensuring that every workshop, seminar, or training you host here runs smoothly, efficiently, and impactfully.

- ✓ **AFFORDABLE**
- ✓ **ACCESSABLE**
- ✓ **EQUIPED**
- ✓ **COMFORTABLE**



## RESIDENTIAL TRAINING CENTRE



**Samarthan**  
Centre for Development Support

Where ideas grow, teams connect, and learning takes shape.

## TRAINING HALL 01



### HALL FACILITIES (CAPACITY: 55 PERSONS)

- PA SYSTEM WITH CORDLESS MIC & SPEAKERS
- AIR-CONDITIONED ENVIRONMENT
- LCD PROJECTOR & SCREEN
- WHITEBOARD WITH MARKER PENS
- ROUND TABLE & CLUSTER SEATING ARRANGEMENT



## TRAINING HALL 02



### HALL FACILITIES (CAPACITY: 55 PERSONS)

- PA SYSTEM WITH CORDLESS MIC & SPEAKERS
- AIR-CONDITIONED ENVIRONMENT
- LCD PROJECTOR & SCREEN
- WHITEBOARD WITH MARKER PENS
- FLEXIBLE SEATING ARRANGEMENTS



## ACCOMMODATION



### ACCOMMODATION FACILITIES (CAPACITY: 50 BEDS)

- AIR-COOLED & AC OPTIONS
- SINGLE, DOUBLE & DORMITORY ROOMS
- ATTACHED WASHROOMS WITH BASIC AMENITIES
- BEDDING WITH PILLOWS, SHEETS, TOWELS & BLANKETS



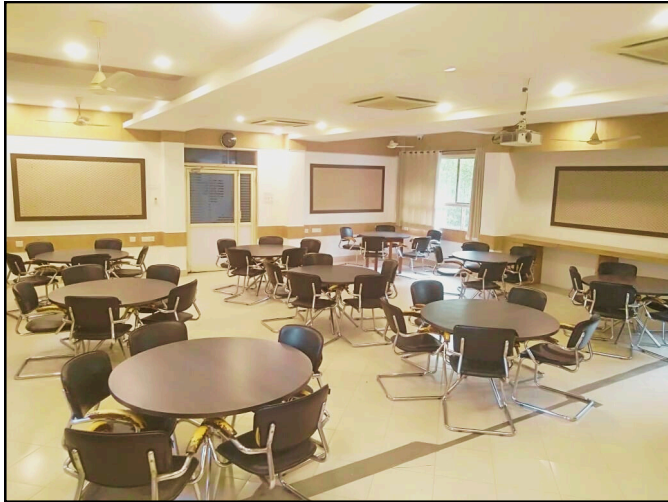
# MEAL PACKAGES – SAMARTHAN REGIONAL TRAINING CENTRE (SRTC)

Particulars	Breakfast	Lunch	Dinner	Tea	High Tea with Snacks
<p><b>Meal Package 1</b> (₹ 645/- Per Person)</p>	<p>Poha/Upma/Bread Pakora/ Aloo Bada</p> <p>OR</p> <p>Puri-Sabji/ Idli-Sambhar/Pav Bhaji</p> <p>Add Ons –</p> <ol style="list-style-type: none"> <li>1. Boiled Egg</li> <li>2. Fruit of Choice</li> <li>3. Sweet (Jalebi/Halwa/Rusk)</li> </ol> <p><b>*Any One</b></p>	<ol style="list-style-type: none"> <li>1. Dal of Choice</li> <li>2. Vegetable 1 Seasonal &amp; 1 with Gravy</li> <li>3. Roti +Rice</li> <li>4. Papad + Pickle + Raita + Salad</li> <li>5. Dessert (Kheer/Indian sweet)</li> </ol>	<ol style="list-style-type: none"> <li>1. Dal of Choice</li> <li>2. Vegetable 1 Seasonal &amp; 1 with Gravy</li> <li>3. Roti +Rice</li> <li>4. Papad + Pickle + Raita + Salad</li> <li>5. Dessert (Kheer/Indian sweet)</li> </ol>	<p>Tea + Biscuit *(Coffee on Demand)</p>	<p>Tea along with Snacks - (Bhajiye/Mangode/ Samosa) <b>*Any one</b></p>
<p><b>Meal Package 2</b> (₹ 610 /-Per Person)</p>	<p>Poha/Upma/Bread Pakora/ Aloo Bada</p> <p>OR</p> <p>Puri-Sabji/ Idli-Sambhar/ Pav Bhaji</p> <p>Add Ons –</p> <ol style="list-style-type: none"> <li>1. Sweet (Jalebi/Halwa/Rusk)</li> </ol> <p><b>*Any One</b></p>	<ol style="list-style-type: none"> <li>1. Dal of Choice</li> <li>2. Vegetable 1 Seasonal</li> <li>3. Roti +Rice</li> <li>4. Papad + Pickle + Raita + Salad</li> <li>5. Dessert (Kheer/Indian sweet)</li> </ol>	<ol style="list-style-type: none"> <li>1. Dal of Choice</li> <li>2. Vegetable 1 Seasonal</li> <li>3. Roti +Rice</li> <li>4. Papad + Pickle + Raita + Salad</li> <li>5. Dessert (Kheer/Indian sweet)</li> </ol>	<p>Tea + Biscuit *(Coffee on Demand)</p>	<p>Tea along with Snacks - (Bhajiye/Mangode/ Samosa) <b>*Any one</b></p>
<p><b>Meal Package 3</b> (₹ 550/- Per Person)</p>	<p>Poha/Upma/Bread Pakora/ Aloo Bada</p> <p>OR</p> <p>Puri-Sabji/ Idli-Sambhar/ Pav Bhaji</p> <p><b>*Any One</b></p>	<ol style="list-style-type: none"> <li>1. Dal of Choice</li> <li>2. Vegetable 1 Seasonal</li> <li>3. Roti +Rice</li> <li>4. Papad / Pickle + Salad</li> </ol>	<ol style="list-style-type: none"> <li>1. Dal of Choice</li> <li>2. Vegetable 1 Seasonal</li> <li>3. Roti +Rice</li> <li>4. Papad / Pickle + Salad</li> </ol>	<p>Tea + Biscuit *(Coffee on Demand)</p>	<p>Tea along with Snacks - (Bhajiye/Mangode/ Samosa) <b>*Any one</b></p>
<p><b>Special Menu (On Demand)</b></p>	<ol style="list-style-type: none"> <li>1. Non-Veg Meal (Chicken with Gravy) @ 150 Per Plate</li> <li>2. Lunch Packet (Puri Sabji) @ 80 Per Packet</li> </ol>				

\*Separate Charges can also be available if meetings are planned for half day

\*All Above rates are excluding taxes

# CONFERENCE PACKAGES – SAMARTHAN REGIONAL TRAINING CENTRE (SRTC)



## CONFERENCE HALL 1 (50 PERSONS)

- FULLY AIR-CONDITIONED HALL
- SOUND SYSTEM WITH MICROPHONES
- OVERHEAD PROJECTOR (OHP) / LCD PROJECTOR
- WHITE BOARD WITH MARKER PENS
- PEN, PAD & WRITING SHEETS
- TABLES & CHAIRS

**₹ 4000  
PER DAY**

**₹ 2000  
PER DAY**

## CONFERENCE HALL 2 (30 PERSONS)

- FULLY AIR-CONDITIONED HALL
- SOUND SYSTEM WITH MICROPHONES
- OVERHEAD PROJECTOR (OHP) / LCD PROJECTOR
- WHITE BOARD WITH MARKER PENS
- PEN, PAD & WRITING SHEETS
- TABLES & CHAIRS



**\*All Prices are Excluding Taxes**



# ACCOMMODATION PACKAGES – SAMARTHAN REGIONAL TRAINING CENTRE (SRTC)



## Residential Training Package

An inclusive, participant-friendly package offering shared accommodation, nutritious meals, and fully equipped training facilities—designed to support meaningful learning and collective engagement for groups of a minimum 20–25 participants (per person, per day)

- **PACKAGE 1 @ ₹ 1400/-**
- **PACKAGE 2 @ ₹ 1370/-**
- **PACKAGE 3 @ ₹ 1310/-**

**Minimum  
20-25 Participants**



## Residential Training Package

An inclusive, participant-friendly package offering shared accommodation, nutritious meals, and fully equipped training facilities—designed to support meaningful learning and collective engagement for groups of a minimum 26 - 50 participants (per person, per day)

- **PACKAGE 1 @ ₹ 1325/-**
- **PACKAGE 2 @ ₹ 1300/-**
- **PACKAGE 3 @ ₹ 1250/-**

**Minimum  
26- 50 Participants**



**Single Occupancy @ ₹ 600**

**Double Occupancy @ ₹ 600 Per Person**

**Triple Occupancy @ ₹ 575 Per Person**

**Dormitory @ ₹ 550 Per Person**

**\*All Prices are Excluding Taxes**