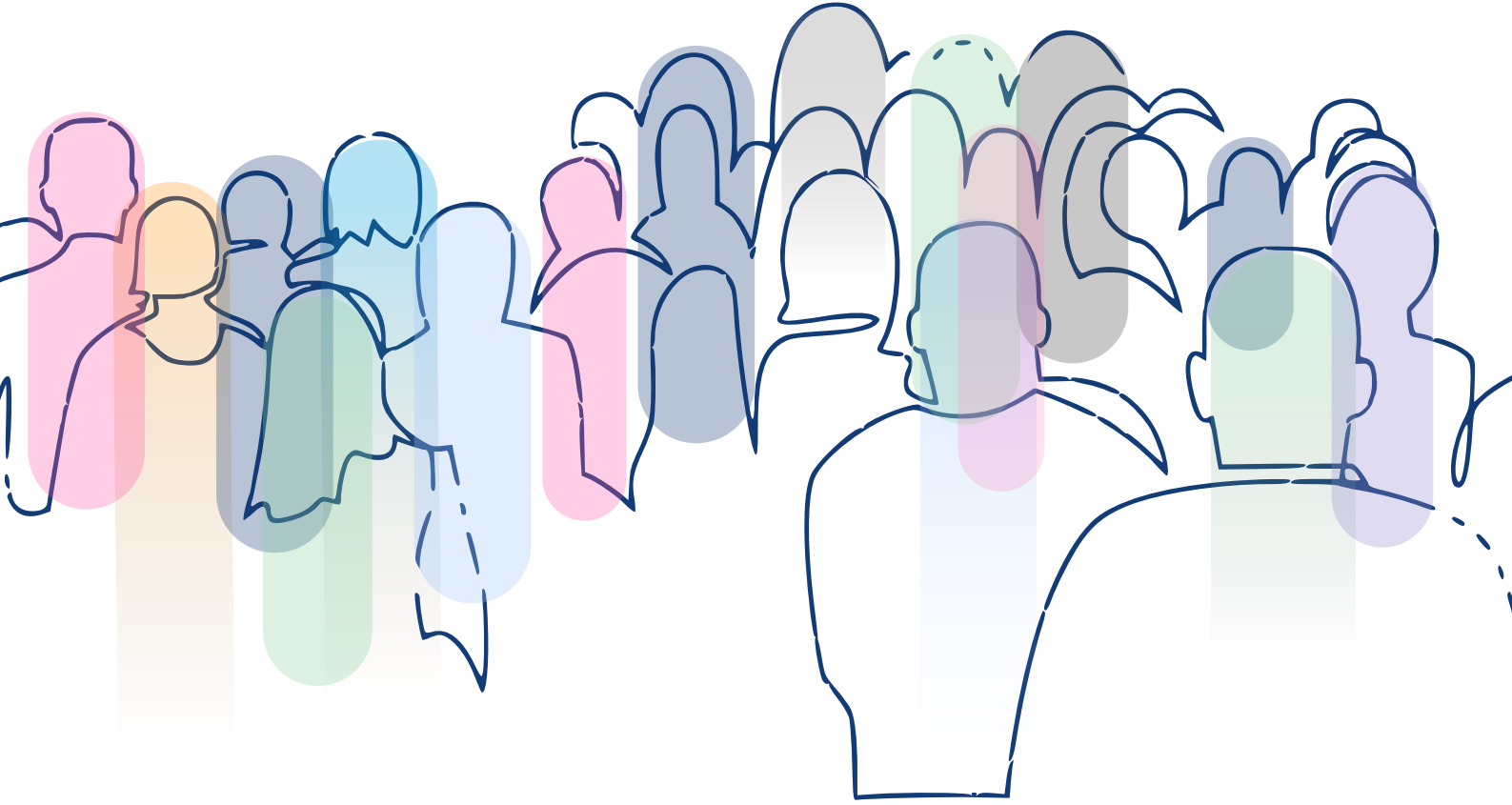


2024

# Annual Report



**Samarthan**

Centre for Development Support

[www.samarthan.org](http://www.samarthan.org)



# A Year Of Integrated Development

At Samarthan, we believe in placing people at the center of development, ensuring that their voices guide decision-making processes within people's institutions and local governance systems. This participatory approach emphasizes the shared responsibility of managing private and public goods in rural areas across Madhya Pradesh and Chhattisgarh. Recognizing the evolving needs of local communities whose livelihoods rely predominantly on agriculture and allied sectors, sustainable agriculture has emerged as a critical area of intervention. This approach integrates access to water, the micro-environment, and professional methods of production, processing, and marketing to build resilient agricultural practices. In tribal areas, where life and livelihoods depend on forests, minor forest produce, cultivation, and labor, these elements are comprehensively incorporated into strategies and interventions.

The quality of rural life is intricately linked to preventive health measures and access to curative healthcare through public institutions. Water, Sanitation, and Hygiene (WASH) are crucial components in preventing waterborne diseases and ensuring healthier communities. Furthermore, responsive health institutions and empowered community organizations play a pivotal role in addressing curative healthcare needs. By integrating WASH and health, we envision a future where women, children, adolescents, and men lead healthier and more economically productive lives.

Effective participation of people is the cornerstone of ownership, sustainability, and relevance of development programs initiated by both state and non-state actors. This participation is fostered by building and strengthening community institutions, such as women's collectives, farmer groups, and youth associations, as well as constitutionally mandated Panchayati Raj Institutions (PRIs). Democratic values and principles of participatory decision-making thrive in institutions where public programs are planned and implemented with transparency and accountability. Samarthan plays a critical role in capacity building for these institutions, ensuring they perform their roles effectively.

Many entitlement holders, particularly those from marginalized and disadvantaged communities, require support and empowerment to demand their legitimate rights. As part of our commitment to social protection, Samarthan strives to improve the delivery of entitlements while establishing mechanisms that facilitate easier access to welfare benefits.

It gives me immense pleasure to present Samarthan's annual report of 2024, which highlights the interconnectedness of our three core areas of intervention—sustainable agriculture, health and WASH, and social protection. This report showcases significant achievements, all made possible by the invaluable support of our visionary Board of Trustees, responsive government officials, committed donor agencies, dedicated grassroots leaders, volunteers, the Samarthan team, and, most importantly, the citizens and their institutions.

We extend our heartfelt gratitude to all our partners and stakeholders and look forward to your continued support, guidance, and encouragement as we move ahead.

**Yogesh Kumar**  
Executive Director



## Our Vision

Every citizen contributes meaningfully in shaping Welfare State of India and enjoys benefits based on the principles of equality and equity



## Our Mission

Promote and support participatory development processes by strengthening capacities of local institutions, generating best practises at the grassroots and widely sharing knowledge for sustainable development





# Significant Achievements of the year

## Sustainable Agriculture & Environment

Madhya Pradesh

### Bio-resource centres

Established 28 centers, reaching over 5,000 farmers in 90 villages across Panna, Sehore, and Dhar districts

Supported farmers with organic inputs, leading to a 15-40% reduction in cultivation costs

### Field Demonstrations

Engaged 1,231 farmers in organic practice demonstrations; 866 adopted organic inoculants for seeds, fertilizers, and pest control

### Drip Irrigation Systems

Installed on 27 acres, benefiting farmers in areas with limited water availability by reducing irrigation water usage by 50%

Chhatisgarh

### Community Forest Resource Management

Empowered communities to manage 900 hectares of forest, earning ₹3.53 lakh annually from forest products and ₹1,03,400 from wood sales by the Gram Sabha.

### Water Conservation

Enabled 1,200 watershed structures, covering 177 hectares, harvesting 3 lakh cubic meters of water, and irrigating 243 hectares of farmland.

### Field Demonstrations

Engaged 1,621 farmers in low-water agriculture, including 196 adopting the SRI method, promoted crop diversification, and established kitchen gardens for 1,571 farmers.



## Water, Sanitation, and Health

Madhya Pradesh

### Grey Water Management in Palthara

Recycled 21 lakh liters of water, equivalent to 50% of the village's total usage

### Handwashing and WASH in Schools

Installed or repaired hand-wash stations in 21 villages, benefiting schoolchildren and Anganwadi centers

Chhatisgarh

### Waste to Nutrition

Developed kitchen gardens using wastewater in 1,200 households, covering 340 acres

### Rainwater Harvesting

Recharged 98.11 lakh liters in Kanker and Durg using abandoned bores, wells, and pumps to boost water security.



## Entitlements and Local Governance

Madhya Pradesh

### Linking Farmers to Schemes

Successfully processed 702 cases of entitlement benefits through village and cluster-level entitlement camps.

### Social protection linkages

10,023 applicants supported for benefits under various government welfare schemes

Chhatisgarh

### Leveraging COVID Vaccination Lessons

Enhanced immunization services in urban slums, tribal, and underserved areas, benefiting 30,000 children

### Social protection linkages

13,900 applicants supported for benefits under various government welfare schemes



# Sustainable Agriculture & Natural Resource Management

Samarthan's approach to promoting sustainable agriculture focuses on addressing the pain points of small and marginal farmers to encourage the adoption of responsible farming practices. Key challenges include high input costs, inadequate irrigation water, and limited diversity in cropping patterns, including vegetables and fruits. Farmers often struggle to utilize government schemes due to inadequate information and lack of facilitation centers for application and follow-up. Samarthan's interventions are designed to enhance farmer capacities, fostering behavioral change through participatory methods to promote sustainable practices in both Madhya Pradesh and Chhattisgarh.

## OVERVIEW IN NUMBERS

**28**

Bio-resource centres in 90 villages

**6,650**

Farmers trained in natural farming

**300**

Tetra-Vermi Bed Units (10-ton annual average / Bed) made covering 90 hectare of land

**963**

Acres irrigation potential developed

**684**

Krishi Sakhi (Agriculture Assistant) trained

**1300**

Farmers linked with the Dalhan Anusandhan Kendra

**30**

varieties of conserved traditional seeds applied for multiplication

**32,000**

Trees planted

**5000**

saplings prepared by CBD/GP



## Building Local Capacities for Sustainable Farming Practices

Building local capacities for sustainable farming practices has been a cornerstone of Samarthan's interventions. Bio Resource Centers have been established as one-stop hubs to provide organic agricultural inputs and advisory services. In Madhya Pradesh, 28 such centers were developed, covering 90 villages in Panna, Sehore, and Dhar districts. As a result, 866 farmers adopted organic inoculants, reducing cultivation costs by 15–40%. Additionally, 300 Tetra-Vermi Bed Units were installed, producing 3,000 tons of vermicompost annually and supporting organic farming on 90 hectares of land.



## Promoting Efficient Water Usage in Agriculture

Efforts to reduce water usage included the introduction of drip irrigation systems for 27 farmers in Dhar district, covering 27 acres. This intervention decreased water usage by 50% and enabled multi-cropping, significantly boosting farmer income.



## Empowering Women in Agriculture

Empowering women has also been a key focus. In Madhya Pradesh, 684 women were trained as Krishi Sakhis, providing agricultural advisory services to farmers, while 47 women were trained as Pashu Sakhis.

## Conservation and Crop Diversification in Chhattisgarh

In Chhattisgarh, Samarthan promoted water conservation and low-water intensity cropping through the construction of check dams, benefiting 600 acres of farmland in Kanker district. Women farmers played a pivotal role, with 1749 women engaged in agricultural practices aimed at doubling incomes.



## Knowledge Sharing and Collaborative Action on Crop Diversification

Samarthan spearheaded knowledge-sharing initiatives in the Bundelkhand region, involving 21 Civil Society Organisations. Furthermore, a collaborative knowledge-sharing program across 14 districts in Madhya Pradesh and Uttar Pradesh facilitated the development of 14 crop diversity blocks, which were showcased to over 500 farmers through 19 Farmer Field Days. This collaborative approach enhanced resilient farming practices and fostered sustainable development in rainfed areas. Through these initiatives, Samarthan continues to empower communities and improve livelihoods, ensuring inclusive access to welfare entitlements to the farming communities.



IMPACT STORY

### Chhaya – a leader in promoting regenerative farming products

Chhaya Solanki, a farmer from Atarsuma village in Dhar district, Madhya Pradesh, exemplifies the power of regenerative farming to improve livelihoods and ecosystems. Owning 1.5 hectares, she transitioned from costly chemical farming to sustainable practices with support from Samarthan.

Faced with high pesticide and fertilizer costs, Chhaya adopted regenerative methods, producing natural inputs like Matka Khad, Panch Patti Kada, and Neem extract. This allowed her to grow diverse crops, including pulse, rice, and cotton, while saving ₹20,000 annually.

Her success inspired the creation of a Bio Input Resource Centre with her self-help group, promoting sustainable practices in her community. Today, 65 farmers in her village practice regenerative farming on 31 hectares. Across Dhar, Barwani, and Panna districts, similar centers support hundreds of farmers.

Chhaya's journey highlights the transformative potential of sustainable farming to improve incomes, protect the environment, and strengthen communities.





# Improving Water, Sanitation, and Health (WASH)



The Jal Jeevan Mission (JJM) has made rapid strides in saturating villages with piped water supply to rural households, but new challenges are emerging. Many households remain excluded in supposedly saturated villages, requiring targeted inclusion efforts. Gram Panchayats and Village Water and Sanitation Committees (VWSCs) need support to manage scheme handovers, establish water tariff systems, and ensure proper water supply management. An efficient, locally tailored operation and maintenance system, leveraging the skills of youth, is urgently needed. Furthermore, grey water and solid waste management are becoming pressing concerns, requiring innovative solutions. To address groundwater stress, Samarthan has introduced a software tool to develop water security plans by calculating demand and supply and identifying structures to enhance surface water retention.

## OVERVIEW IN NUMBERS

**150**

Village Action Plans developed for piped water supply

**140**

Villages with community managed O&M for water supply systems

**305**

Youth volunteers trained on water issues

**16,000**

Excluded households connected with piped water supply

**222**

Water storage systems Repaired/ created

**800**

Hand-wash stations established in schools

**200**

Water security plans developed using Jal Suraksha app

**12,000**

environment friendly cotton sanitary pads locally produced and used



## Strengthening Water Systems

Under the Jal Jeevan Mission, Samarthan strengthened water systems in Madhya Pradesh by training 1,735 PRI members and officials across 368 Gram Panchayats. In Palthara village, a model grey water management system was implemented, recycling 21 lakh liters of water—50% of the village's total usage. Additionally, rooftop rainwater harvesting systems established in schools and Anganwari centre over the roof area of 10,000 square feet conserved 6.2 lakh litres, significantly enhancing water security in these institutions.

## Addressing Malnutrition through WASH Innovations

To address malnutrition, in the Participatory Village Action Plans, potential for kitchen gardening using grey water was identified in 68 villages. In selected villages receiving regular piped water, water tariff of ₹2.37 lakh was mobilized for piped water supply maintenance. Women-led initiatives inspired the replication of kitchen gardens in 800 households, yielding 7,000 kg of vegetables annually for sale and personal consumption to improve dietary diversity.



## Promoting Hygiene Awareness

Hygiene and sanitation awareness were promoted through the Football for WASH initiative, engaging 554 children (230 boys and 324 girls) across 24 schools in 41 villages in Panna. These efforts emphasised handwashing, safe water handling, and the prevention of waterborne diseases.

## Improving Healthcare Accessibility

Healthcare accessibility has also improved, with enhanced facilities leading to a rise in monthly patient footfall from 232 to 470 in the intervened Public Health Centres in CG. Proactive measures such as chlorination and sanitation surveys mitigated waterborne disease risks.





## Leveraging the Gram Panchayat Development Plan for Health Services

The Gram Panchayat Development Plan (GPDP) serves as a critical tool for promoting economic development and social justice through participatory governance. Each year, the GPDP includes thematic areas such as Healthy Village and Clean and Green Village, which integrate Water, Sanitation, and Hygiene (WASH) and health services into village planning. By involving community institutions like Jeevan Deep Samitis, Jan Arogya Samitis, and Village Health Nutrition Committees (VHNCs), the GPDP fosters a holistic approach to health services.

Samarthan has strengthened health services in 30 Gram Panchayats in Raipur, Durg and Sarguja districts by leveraging the GPDP framework. Through capacity building and participatory planning campaigns, Samarthan facilitated needs analysis, vision mapping, and actionable plans approved by the Gram Sabha. These efforts resulted in the preparation of health-focused development plans valued at ₹662 lakh, ensuring better alignment of resources with community needs and enhancing health service delivery.

**31,000**

individuals reached for health checkup and medication through village camps

**30,000**

Children of marginalised section vaccinated

**4.5 Lakh**

Individuals informed about the immunisation benefits

**358**

Public healthcare facilities supported for participatory planning

**16,500**

Individuals received HIV prevention care and support



STORIES FROM THE FIELD

## Kitchen Gardens: Transforming Greywater into Nutrition and Health

Fifteen-year-old Lakshmi and ten-year-old Aman, along with their younger brother Amrit, live with their grandparents in Barachh village, Panna district. Their parents migrate seasonally for work, leaving the family struggling to provide regular balanced meals, which affected the children's health and schooling.

To address this, volunteers engaged families with piped water to manage greywater for kitchen gardens. Jal Mitra identified a drain near their home and demonstrated how to divert greywater to create garden beds using locally available seeds. Inspired, Lakshmi, Aman, and their grandparents planted 7-8 vegetable varieties. Within 30-35 days, they began harvesting fresh, nutritious vegetables daily.

This small change has improved the children's health, enabling them to focus on their studies. Now part of a water brigade, Lakshmi and Aman are sharing the benefits of greywater gardening with other households, inspiring their community to embrace sustainable solutions.



**2,050**

kitchen gardens developed using grey water







# Promoting Social Protection and Nurturing Community Institutions

Participatory governance ensures that citizens or entitlement holders can access the benefits of welfare state initiatives and government schemes. One major challenge for farmers is the complex process of land mutation and obtaining clear titles, which are prerequisites for accessing several benefits. Simplifying this process through active engagement is essential. To streamline entitlement tracking and resolution, Samarthan has introduced the Jan Darpan application, designed for efficient registration and tracking. Additionally, information and application facilitation centers have been established in remote areas to assist disadvantaged citizens effectively.

## OVERVIEW IN NUMBERS

**23,990**

Individuals supported for benefits under various government welfare schemes

**3,400**

Members trained on Village Health, Sanitation, and Nutrition Committees (VHSNC)

**935**

Gram Panchayat development plans developed

**1735**

Gram Panchayat representatives trained on GPDP



## Expanding Access to Government Schemes

Samarthan's initiatives enabled 23,990 individuals to access government schemes through village-level entitlement camps. Additionally, land ownership issues were addressed through focused interventions, resolving 702 cases and expediting access to agricultural benefits.

APPLICATIONS SUBMITTED FOR REALISATION OF ENTITLEMENTS

**14,706**

Central government schemes

**7,333**

Chhattisgarh government schemes

**1,951**

Madhya Pradesh government schemes

**23,990**

Total Applications

## Advancing Social Protection Through Labour Resource Centers

Samarthan's Labour Resource Centers in Chhattisgarh have facilitated significant advancements in social protection. 22 Shramik Mitras have been trained to support labor registration and migration mapping, linking 2,178 individuals to welfare schemes and 520 to skill training programs.



IMPACT STORY

## Empowering Access to Entitlements: Fulbati Dugga's Journey

Fulbati Dugga's story highlights the transformative role of community facilitation in accessing welfare benefits. Her husband had been registered under the Shahid Mahendra Tendupattaa Yojna since 2000, but the family was unaware of its benefits or the application process until the Gram Sewa Kendras (GSK) in Kanker intervened in 2022.

After her husband's untimely death due to epilepsy on January 19, 2023, Fulbati was unaware of her eligibility to claim benefits under the scheme. The GSK team guided her through the claim process, assisting with both online and offline form submissions and ensuring all necessary documents were properly filed with the forest department. Within 2-4 months, Fulbati received ₹2,00,000 as the nominee on her husband's Tendupattaa card, providing crucial financial security for her family.

The GSK intervention also supported 123 other families in registering under the scheme. Two families, including Fulbati's, successfully claimed ₹2,00,000 each, demonstrating the significant impact of accessible and informed facilitation.





# Organisational Transparency and Accountability

## Bankers And Auditors Details

Name of Banks	Statutory Auditor	Internal Auditor	Management Consultant
State Bank of India ICICI Bank Ltd HDFC Bank Ltd Axis Bank Kotak Mahindra Bank	M/s AKB Jain & Co. Chartered Accountants E - 2/316, Arera Colony Bhopal - 462016	R Rishi and Associates Chartered Accountants S-3, Goyal Niket Apartment, Press Complex, MP Nagar Bhopal - 462016	CA Arun Mehrotra Chartered Accounts Bhopal

## Income And Expenditure Accounts Of Financial Year 2023-2024

Particulars	Financial Year 2023-2024		Financial Year 2022-2023	
	INR	%	INR	%
Income				
Indian Sources	4,66,70,578	48%	5,74,87,641	49%
Foreign Sources	4,41,02,405	46%	5,45,44,880	46%
Bank Interest	55,40,823	6%	58,76,254	5%
<b>Total</b>	<b>9,63,13,806</b>	<b>100%</b>	<b>11,79,08,775</b>	<b>100%</b>
Expenditure				
Indian Sources	5,05,28,040	52%	59,121,414	53%
Foreign Sources	4,28,38,290	45%	53,297,473	47%
Excess Income over Expenditure	29,47,476	3%	54,89,888	5%
<b>Total</b>	<b>9,63,13,806</b>	<b>100%</b>	<b>11,79,08,775</b>	<b>100%</b>

## Staff Profile

Remuneration slabs (INR/Month)	Numbers
Under 15000	26
15001-20000	10
20001-30000	14
30001- 40000	12
40001-50000	05
50001 and above	07
Village level Volunteers	44
<b>Total</b>	<b>118</b>

## Major Funding Partners

### INTERNATIONAL ORGANISATIONS

Deutsche Welthungerhilfe (WHH)

Ford Foundation

John D. and Catherine T. MacArthur Foundation

JSI Research & Training Institute, Inc. (JSI)

Water aid America, United States of America

### CSR AGENCIES

ENKING International

LIC housing Finance Limited (LIC HFL)

SBI Foundation

### INDIAN ORGANISATIONS

Azim Premji Philanthropic Initiatives

Bharat Rural Livelihood Foundation

Transforming Rural India Foundation, New Delhi (TRIF)

### UN INSTITUTIONS

International Labour Organisation (ILO)

The United Nations Children's Fund (UNICEF)

### GOVERNMENT AGENCIES

Chhattisgarh State Aids Control Society (CG-SACS)

Jal Jeevan Mission (KRC)

Madhya Pradesh Tourism Board (MPTB)



# Board of Trustees

## **Prof. Amitabh Kundu, Chairperson**

Prof. Amitabh Kundu is an eminent social scientist and former professor at Jawaharlal Nehru University, Delhi and a visiting faculty at several international universities. Dr Kundu recently chaired a Committee to establish the State Statistical Commission in MP. He is also chairing the Committee for overseeing the survey for Swachh Bharat Mission (Rural), set up by the Ministry of Rural Development and Panchayati Raj, Government of India. He chaired the post-Sachar Evaluation Committee, set up by the Ministry of Minority Affairs, Government of India.

## **Dr. Abhay Kumar Pandey, Trustee**

Dr. Abhay Kumar Pandey is currently a Professor at the Government Model College, Umaria. He was the Director of the MP Social Audit Society, a semi-autonomous body set up by the Government of MP. Dr. Abhay Pandey was the founder of Lok Shakti, a large-scale Non-Governmental Organisation, which served the tribal communities of Chhattisgarh.

## **Mr. Ashok Singh, Treasurer**

Mr. Ashok Singh is the Executive Director of SSK (Sahbhagi Shikshan Kendra), Lucknow, a state-level support organisation specialising in participatory training. He is the executive committee member of VANI, a network of NGOs and serves as a member on various committees set up by the Government of U.P.

## **Ms. Banashree Banerjee, Trustee**

Ms. Banashree Banerjee is an Urban Planner. She has been a consultant on urban poverty reduction projects in India, Egypt and Bangladesh. The focus of her work has been inclusive and participatory approaches to urban planning and management.

## **Dr. Rajesh Tandon, Trustee**

Dr. Rajesh Tandon is the President of PRIA and is internationally known for his contribution to participatory research. The Chairperson of many international committees, as well as, of the advisory committees of the Government of India, he is currently the Chairperson of UNESCO in community-based research and social responsibility in higher education. Dr. Tandon serves as chairperson of the Global Alliance on Community-Engaged Research (GACER) network, which facilitates the sharing of knowledge and information worldwide to further community-based research.

## **Mr. S.K Misra, Trustee**

Mr. S.K Misra served as the Chief Secretary of the Government of Chhattisgarh. Later, he worked as Chairman of the CG Electricity Board and CG State Administrative Reform Commission. Mr. Misra was also an Advisor of Chhattisgarh's Second State Finance Commission.

## **Dr. Yogesh Kumar, Trustee And Executive Director**

Dr. Yogesh Kumar, a doctorate in development economics, has worked for several years to promote community participation and civil society capacity building initiatives. He specialises in participatory planning, monitoring and evaluation.

---

## **Mr. A.K Surana, Financial Advisor**

Mr. Surana is a Chartered Accountant and Senior Fellow Member of the Institute of Chartered Accountants of India. He has extensive experience in reviewing re-structuring and developing financial management systems and accounting practices, budgeting, expenditure control, procurement procedure, finance, accounting, audit, company law and taxation matters for a host of projects and organisations in corporate and non-corporate entities in Government, Public and Private Sector.

## **Dr. M. Kandasami, Financial Advisor**

Dr. M. Kandasami is a renowned financial and organisational management expert in South Asia having more than three decades of expertise in the financial and organisational management of nonprofit organisations.





### Head Office

36, Green Avenue, Chuna Bhatti, Kolar Road  
Bhopal, Madhya Pradesh  
462016

### Chhattisgarh State Office

House No.1, Behind Bank of Baroda, KPS Dunda,  
Raipur, Chhattisgarh  
492015